



Coordinates Bomb Craters of Pilot Paul Hildreth: Bomb Crater 1 und Fuselage: 47°45'30.6"N 10°05'03.8"E

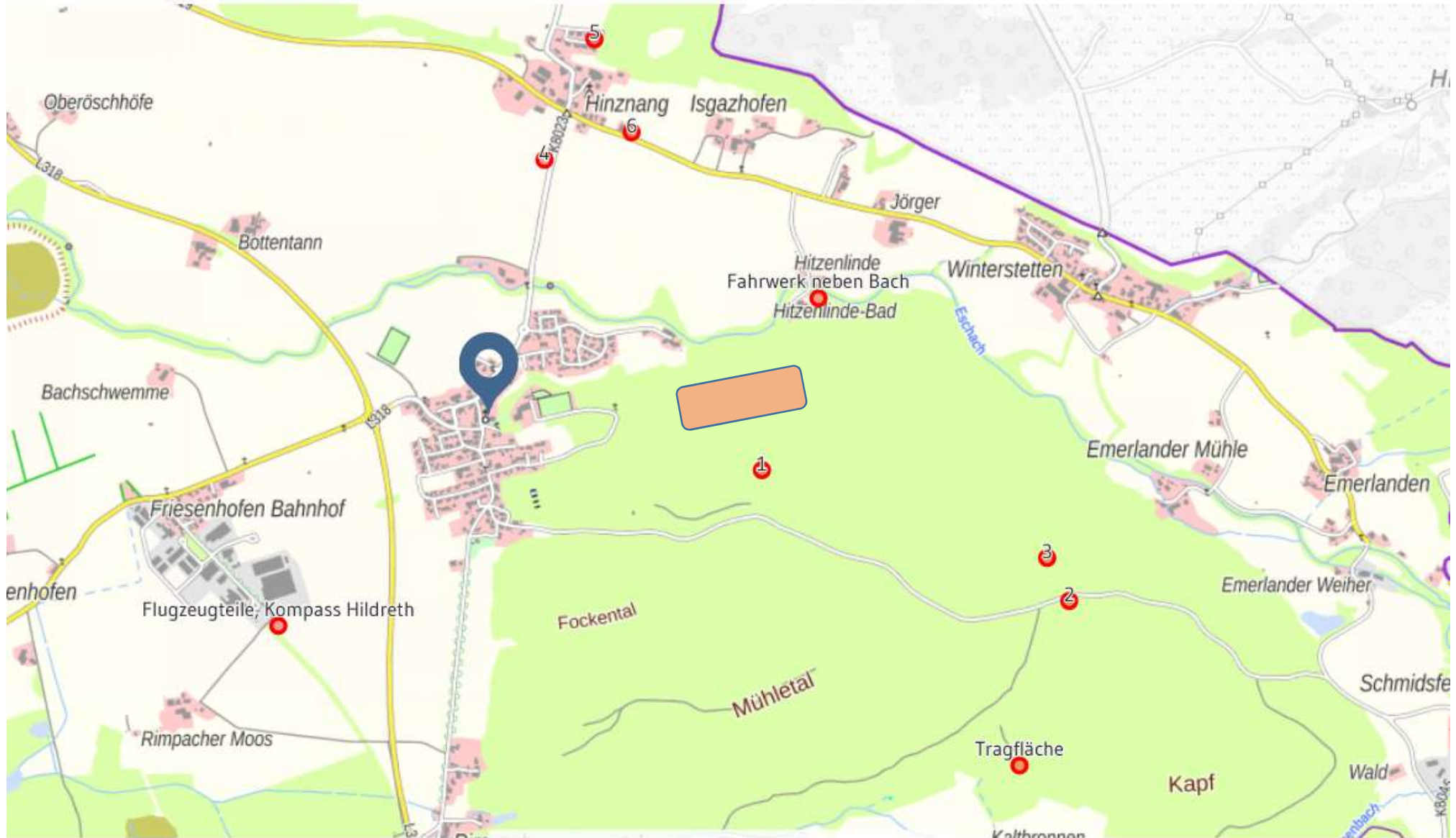
Bomb Crater 2: 47°45'16.0"N 10°05'52.7"E


Bomb Crater 3 (Discovered August 20th 2020): 47°45'20.3"N 10°05'50.0"E



Erstellt: Thomas Südbeck 20.08.2020

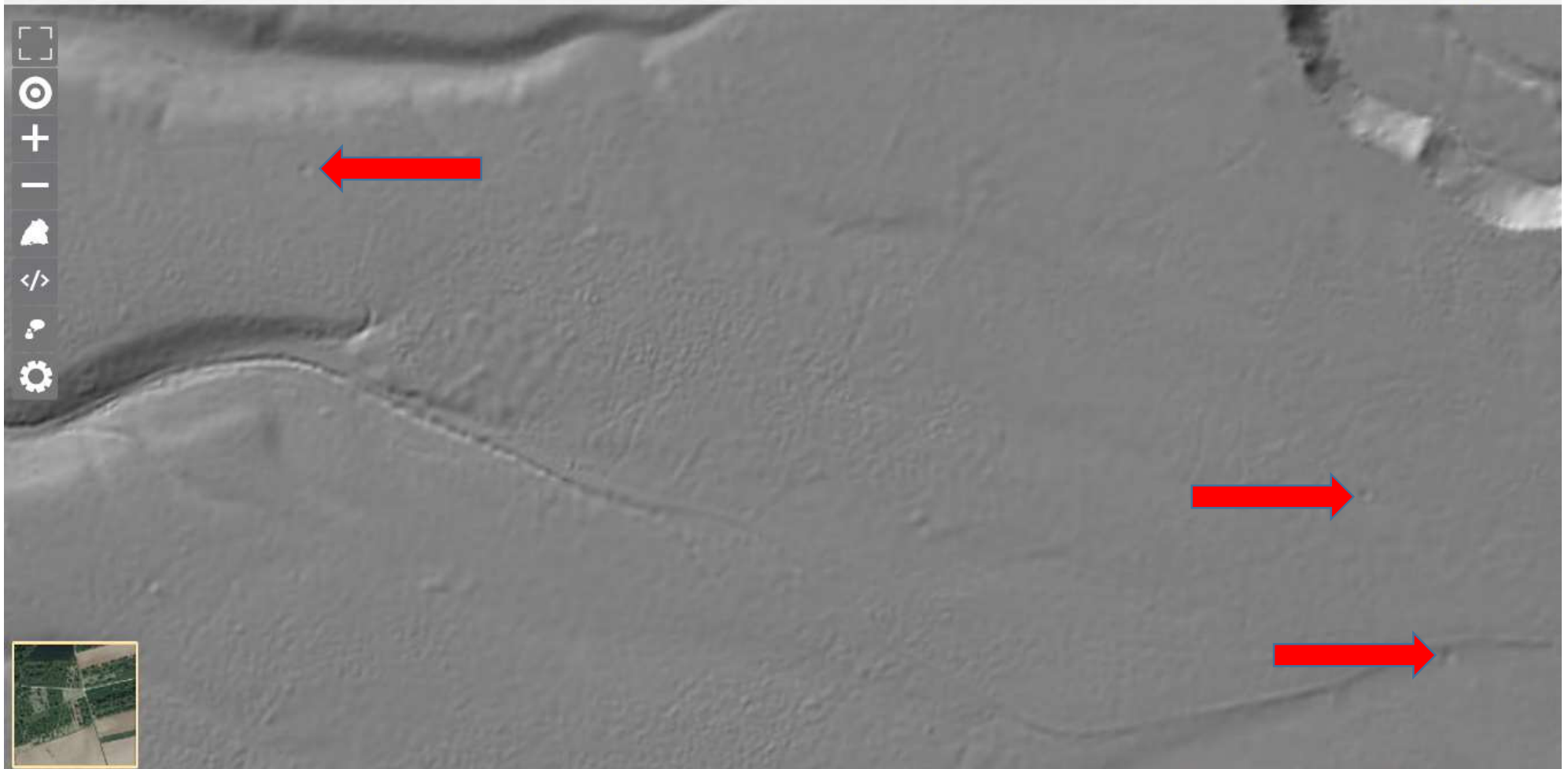
Absturzzone B-17 G Fortress vom Pilot Hildreth komplett (Nummern 1-6 = 250lb Bomben – neben 1 lag auch der Rumpf oder Teile davon lt. Gerhard Schmaus):



 = Many parts a little north of the fuselage and bomb crater 1



On the left: Parts of the fuselage and where the compass of Pilot Hildreth was found ... On the left in the wood: part of the wing (Tragfläche)



On the relief you can see the craters of the bombs!

Erstellt: Thomas Südbeck 20.08.2020

